



Pretty  
Plastic

building from waste

info@prettyplastic.nl  
www.prettyplastic.nl  
@we\_are\_prettyplastic

## FIRST ONE INSTALLATION MANUAL

July 2024

# INSTALLATION MANUAL

**PRODUCT NAME** FIRST ONE

## TECHNICAL DATA

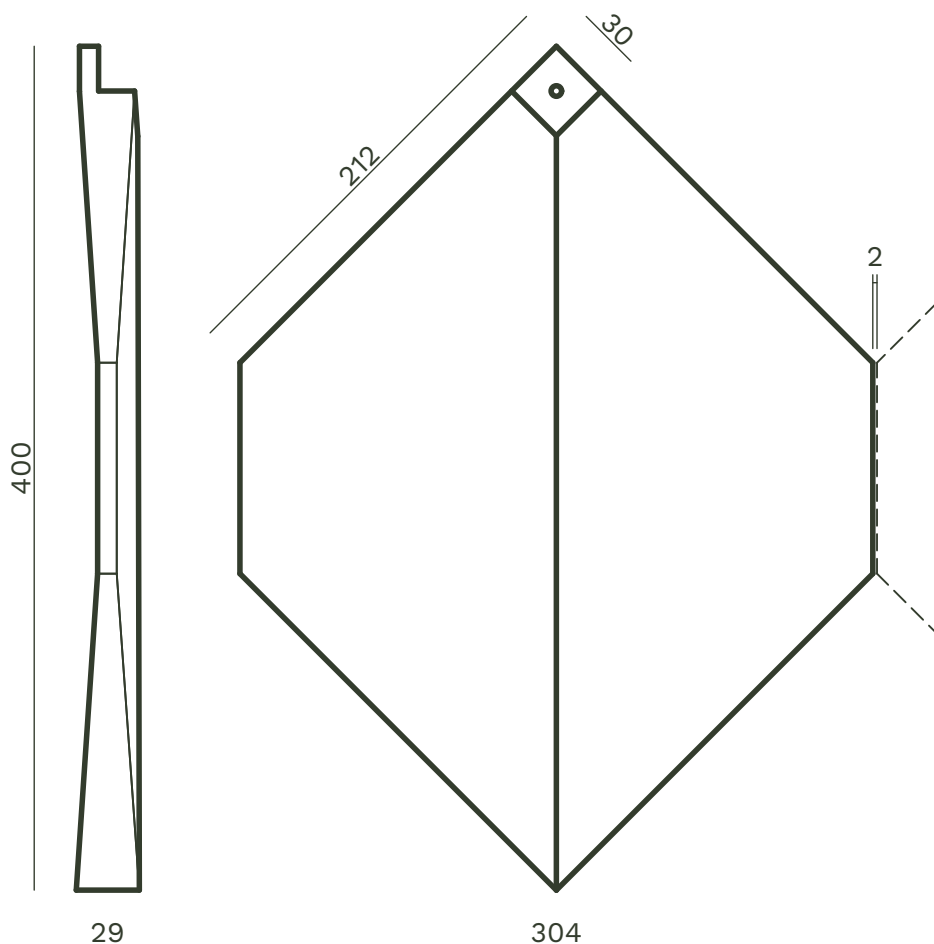
HEIGHT	400mm
WIDTH	304mm
THICKNESS	29mm

NUMBER OF TILES PER M <sup>2</sup>	22.2
WEIGHT PER TILE	1.1kg
WEIGHT PER M <sup>2</sup>	24.4kg

MATERIAL	recycled Polyvinylchlorid (PVC)
----------	---------------------------------

FLAMMABILITY (EN 13501-1:2018)	B-s3,d0
--------------------------------	---------

PRODUCTION TOLERANCES	+/-2%
-----------------------	-------



# INSTALLATION MANUAL



**PRODUCT NAME** FIRST ONE

## PRODUCT

Pretty Plastic tiles are utilized in ventilated facades, catering to both renovation projects and newly constructed facades.

## PROCESSING

Pretty Plastic can be cut or drilled without producing any splinters. Tiles can be cut using a jigsaw, circular saw, or handsaw. Always use an appropriate shop vac when cutting tiles with a power saw to prevent the sawdust from spreading into the environment. Collect sawing waste and cutting losses separately to prevent them from being blown away. Make sure to manage these waste materials properly.

## APPLICATION

- Pretty Plastic tiles can be installed at angles up to a maximum of 45 degrees, given the application of a water-retaining layer.
- It's important to note that the structural engineer holds the final responsibility for ensuring the accurate installation and application of the tiles.

## PAINTING

Please note that Pretty Plastic tiles are not intended for painting.

## MAINTENANCE

Pretty Plastic is maintenance-free and can be cleaned using household cleaning products.

## INSTALLATION

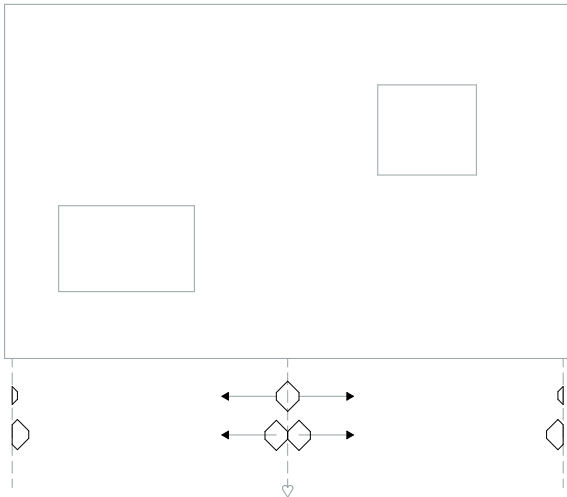
Pretty Plastic tiles should be attached to a wall with an underlying wooden structure composed of wooden slats (C18); these should have a minimum dimension of 24x48mm or 28x45mm, which are commonly available sizes in the EU.

- Install horizontal slats with a 150mm spacing on a vertical substructure set 600mm apart.
- The vertical substructure creates a ventilated cavity.
- Include ventilation openings at both the top and bottom ends of the facade.
- Secure each tile using either one or three screws, depending on the building's height and the local wind load according to NEN-EN 1991-1-4. Check our technical guide for detailed information.
- Between tiles a space of at least 2mm is advised.
- For corner ends and window frame connections, refer to the proposed detail drawings for various possible solutions.

# INSTALLATION MANUAL

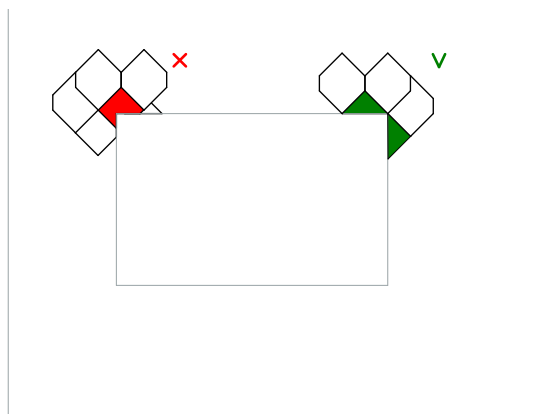
**PRODUCT NAME** FIRST ONE

## DESIGN SUGGESTIONS



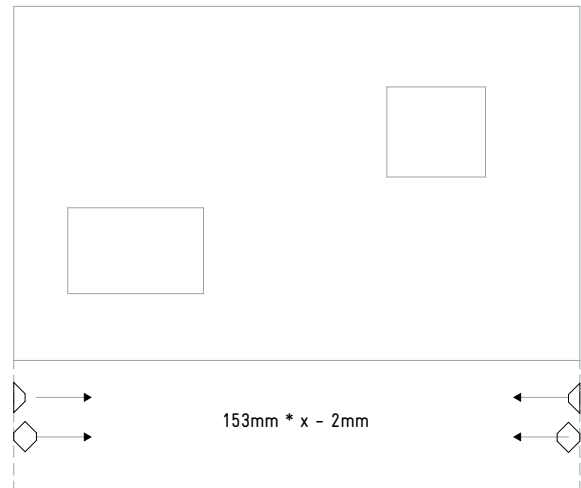
### OPTION A

- Begin from the middle, ensuring two identical corner endings.
- Ideal when utilizing a corner profile.



### WINDOW CORNERS

Try to cut the tiles in a single direction rather than sawing a corner.



### OPTION B

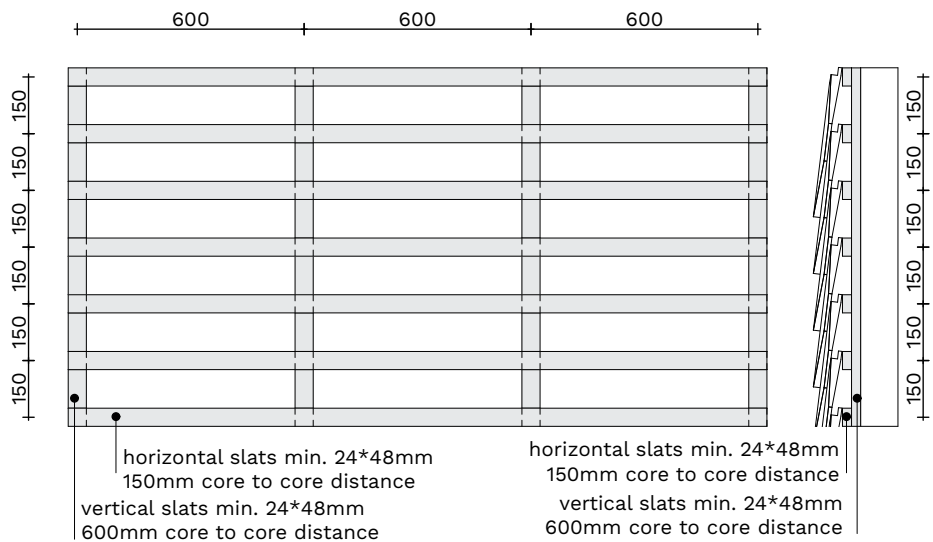
- Begin from a corner, utilizing a complete (and half) tile to achieve a tidy corner.
- If necessary, add an additional 3mm gap between the tiles (153mm will then be 154mm, 155mm or 156mm).



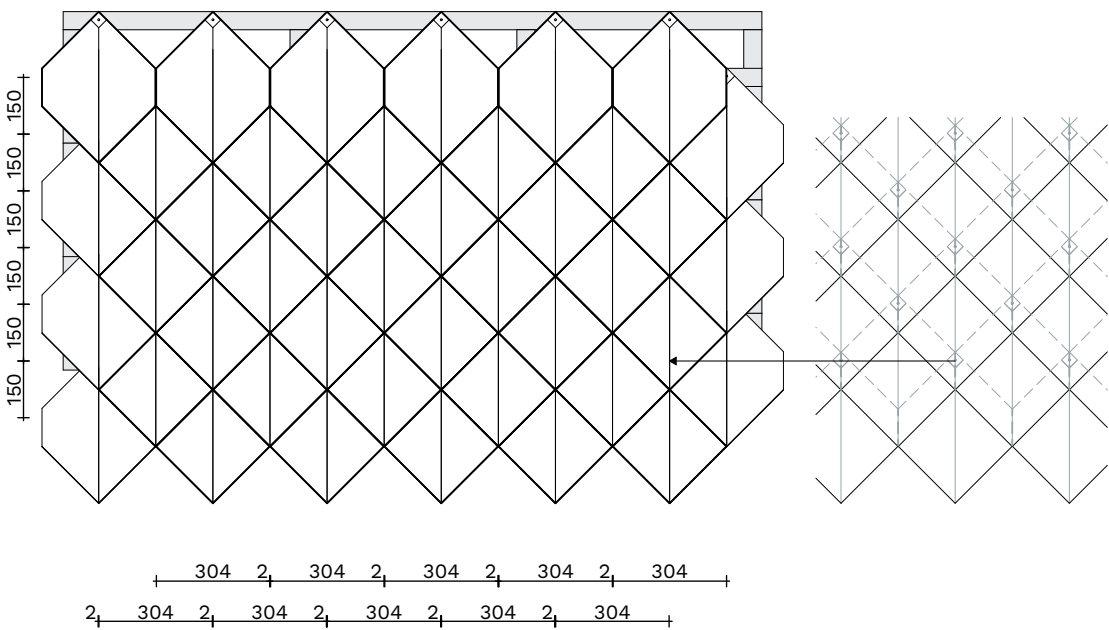
# INSTALLATION MANUAL

**PRODUCT NAME** FIRST ONE

## WOODEN STRUCTURE



## TILE PATTERN



# INSTALLATION MANUAL

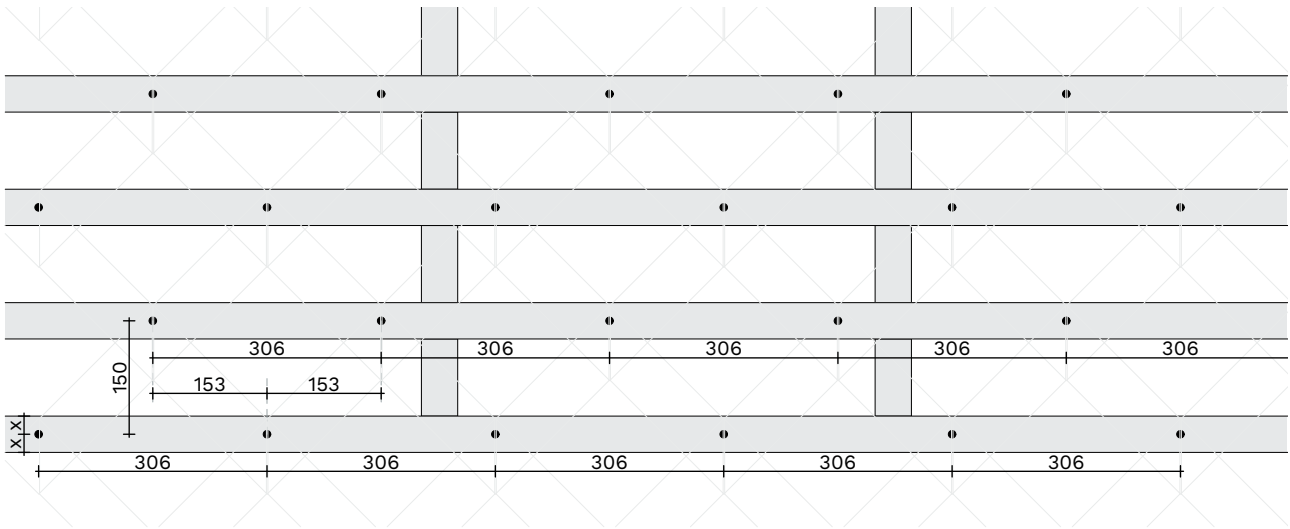


Pretty  
Plastic

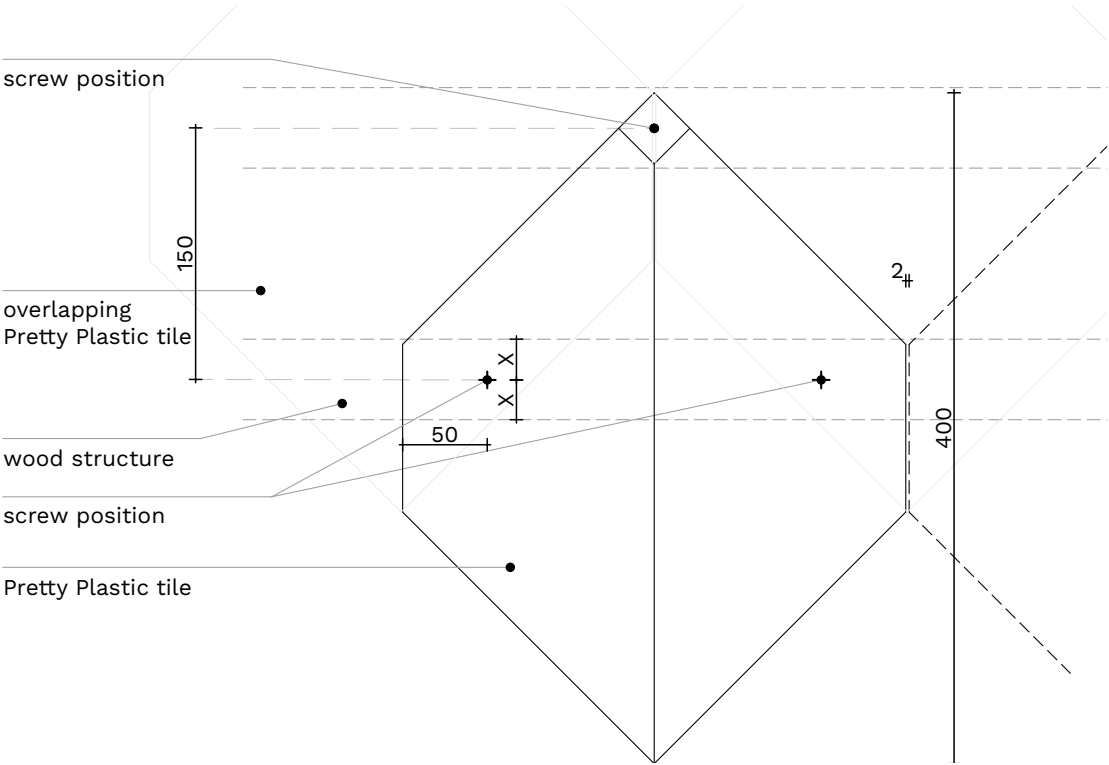
building from waste

**PRODUCT NAME** FIRST ONE

## MEASURE PLAN



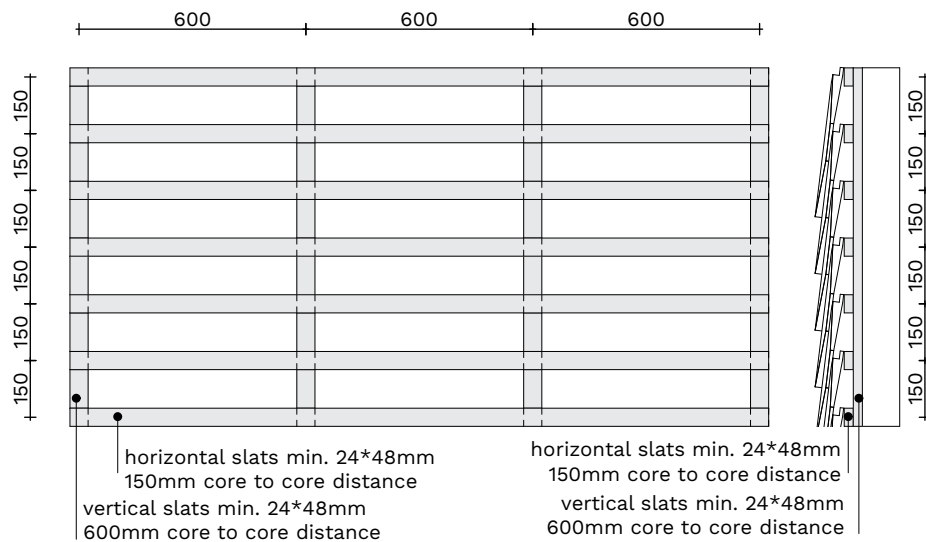
## SCREW POSITIONS



# INSTALLATION MANUAL

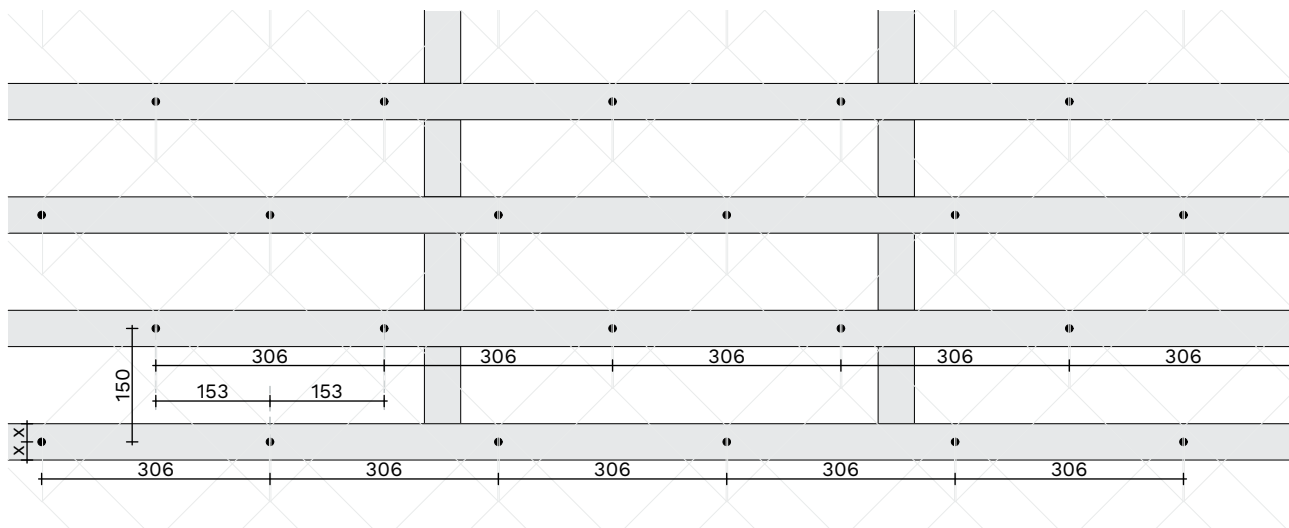
**PRODUCT NAME** FIRST ONE

## STEP 1



1. Construct a wooden framework in front of the (insulated) wall.

## STEP 2



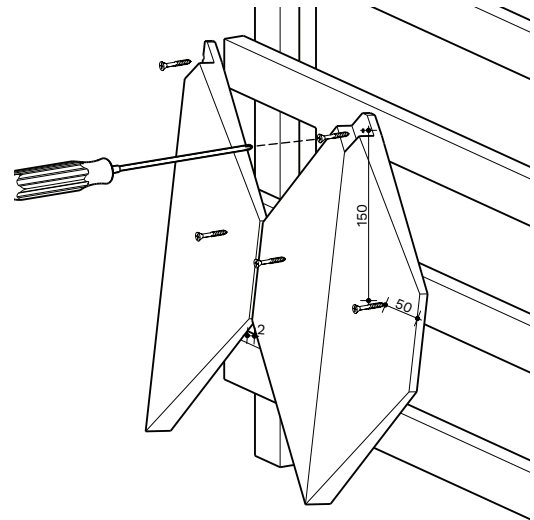
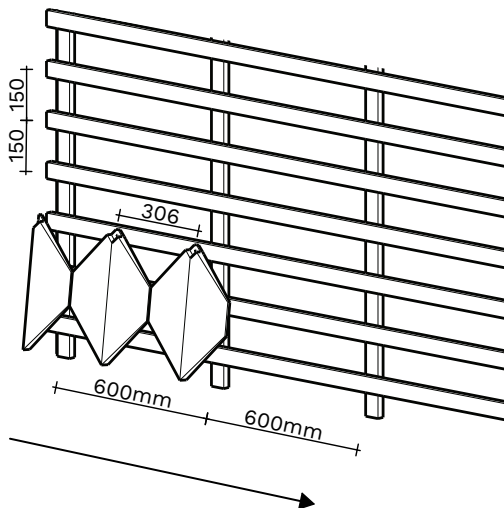
2. Determine the starting point based on the corner detail (details d12-d16) and follow the design instructions (p 4).

Mark screw points on the wooden structure.

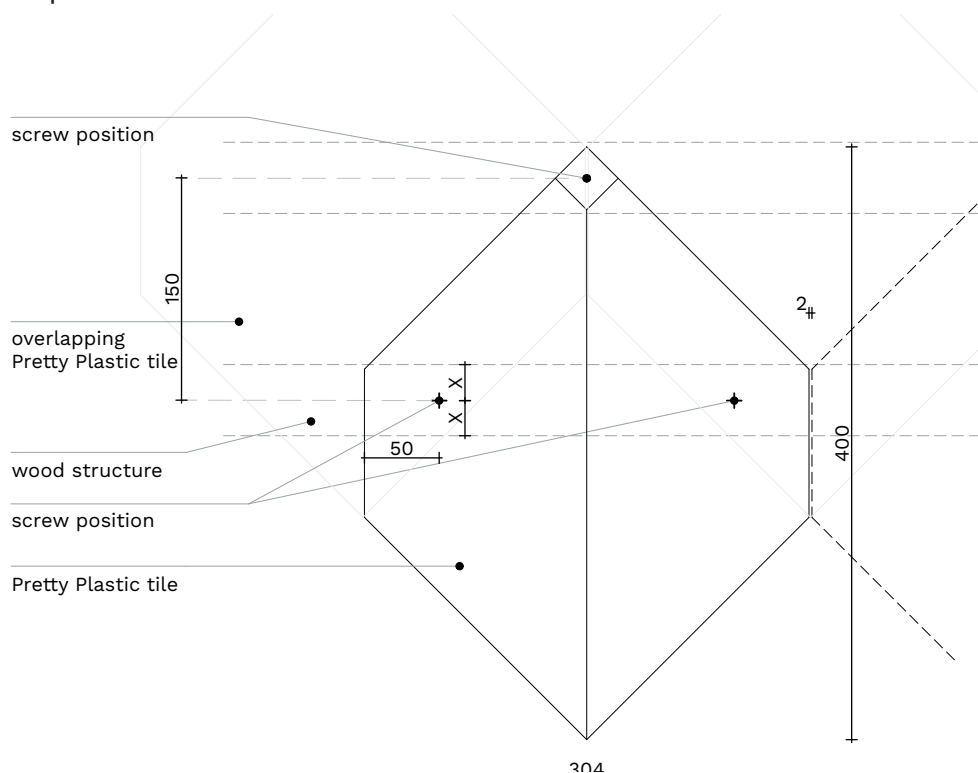
# INSTALLATION MANUAL

**PRODUCT NAME** FIRST ONE

## STEP 3



3. Begin at the left bottom corner or the middle of the bottom row. Install and screw in the bottom row, using three screws per tile.

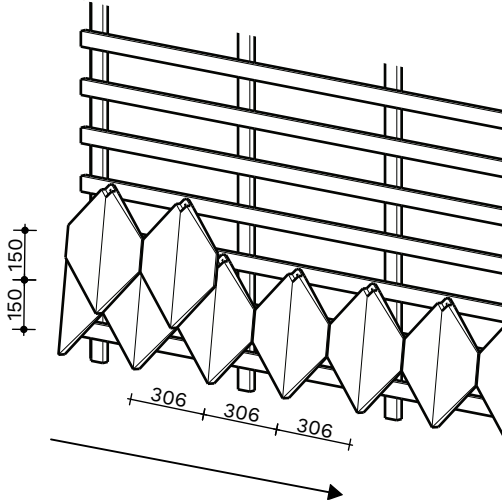




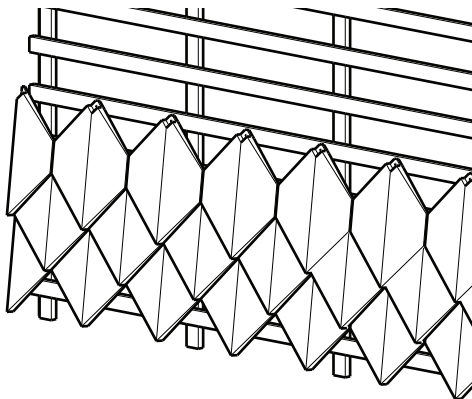
# INSTALLATION MANUAL

**PRODUCT NAME** FIRST ONE

## STEP 4



4. Continue with the next rows. Tiles can be cut to fit as necessary.



**PRODUCT NAME** FIRST ONE

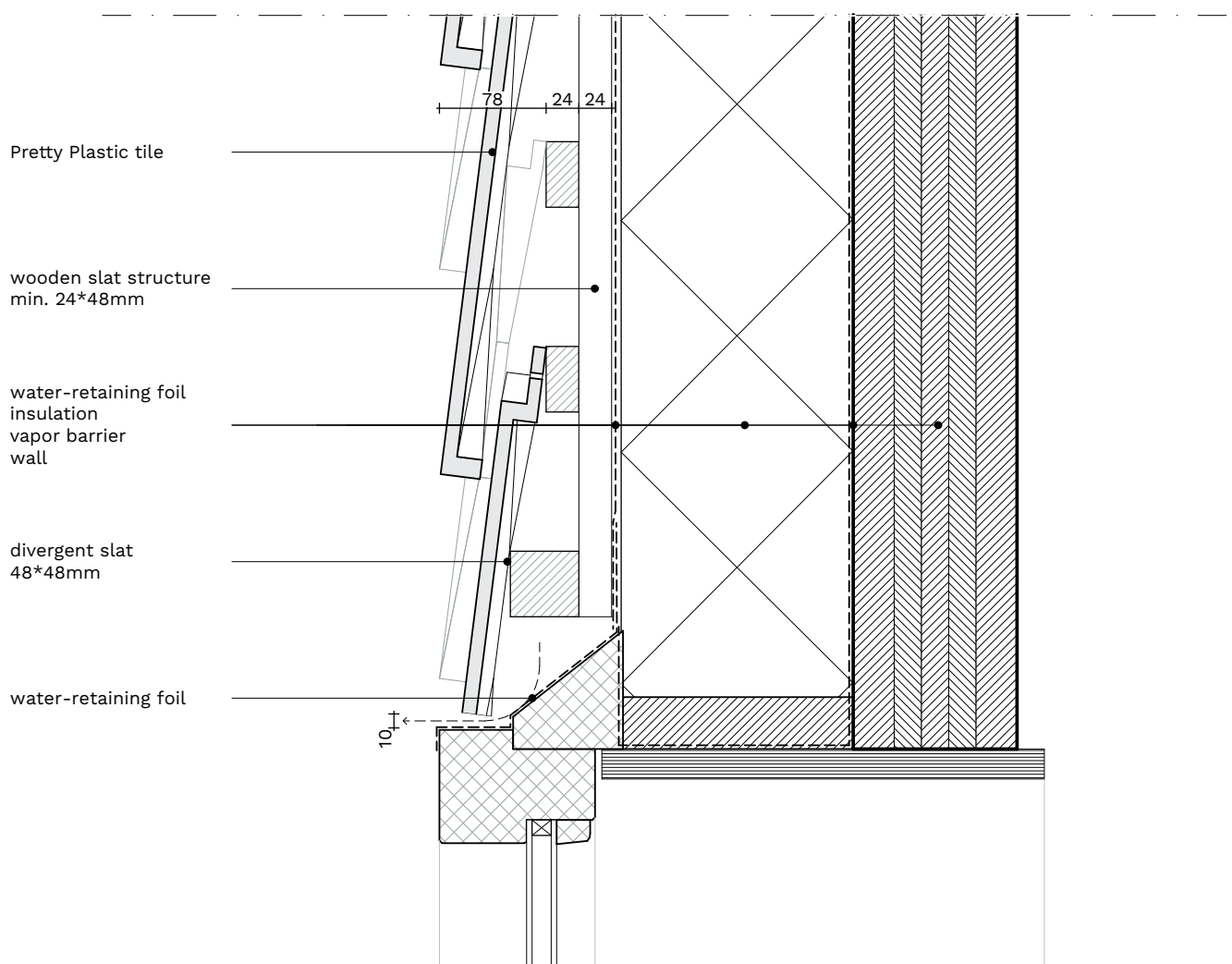
# principle details

# INSTALLATION MANUAL

**PRODUCT NAME** FIRST ONE

## **D1 - TOP CONNECTION WINDOW FRAME**

SCALE 1:5



# INSTALLATION MANUAL

**PRODUCT NAME** FIRST ONE

## **D2 - BOTTOM CONNECTION WINDOW FRAME**

SCALE 1:5

divergent slat required  
for securing upper row  
cutting of tiles to fit  
should be determined  
on-site

Pretty Plastic tile

water-retaining foil

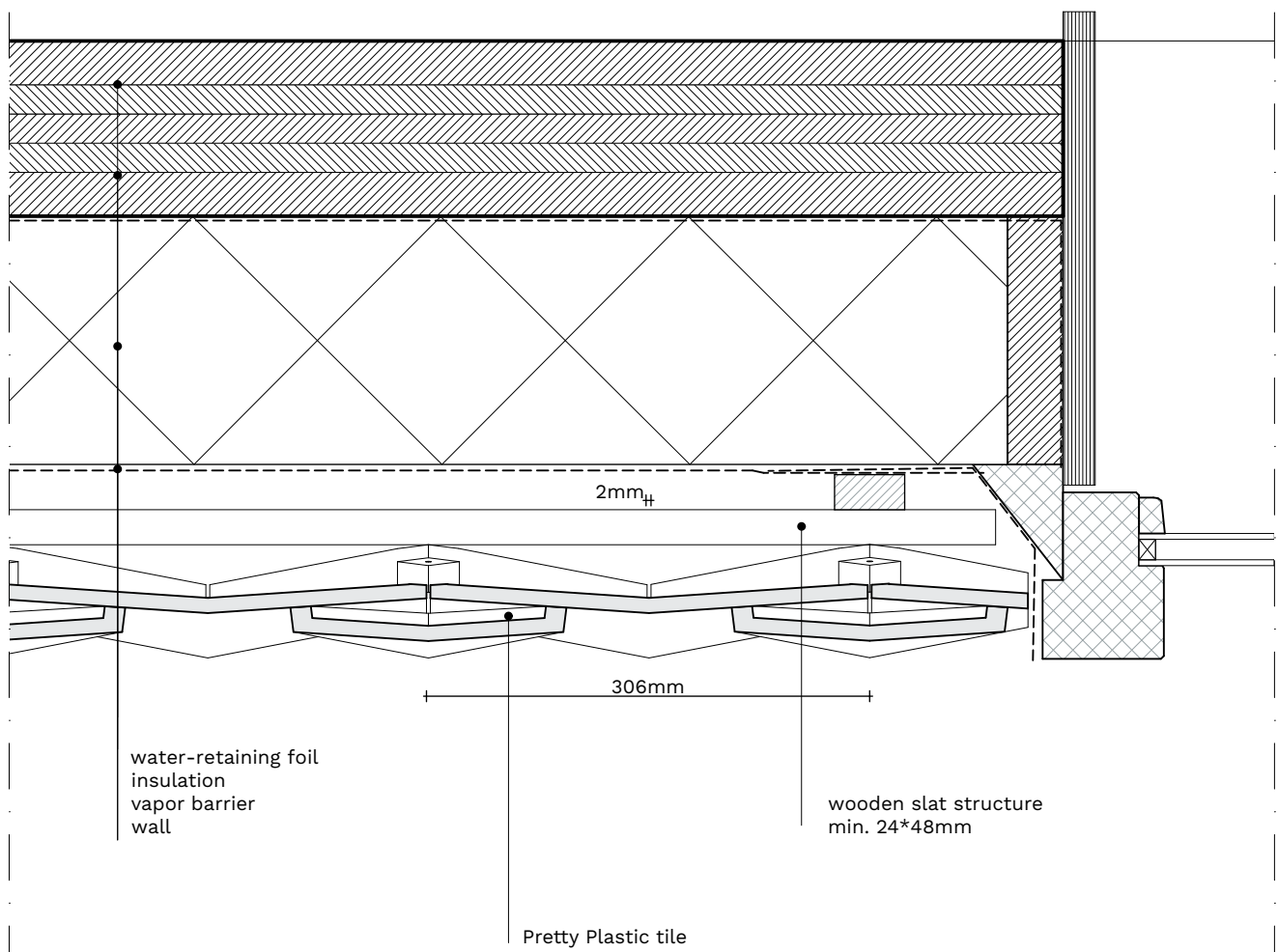
78 24 24

# INSTALLATION MANUAL

**PRODUCT NAME** FIRST ONE

## **D3 - WINDOW FRAME HORIZONTAL**

SCALE 1:5

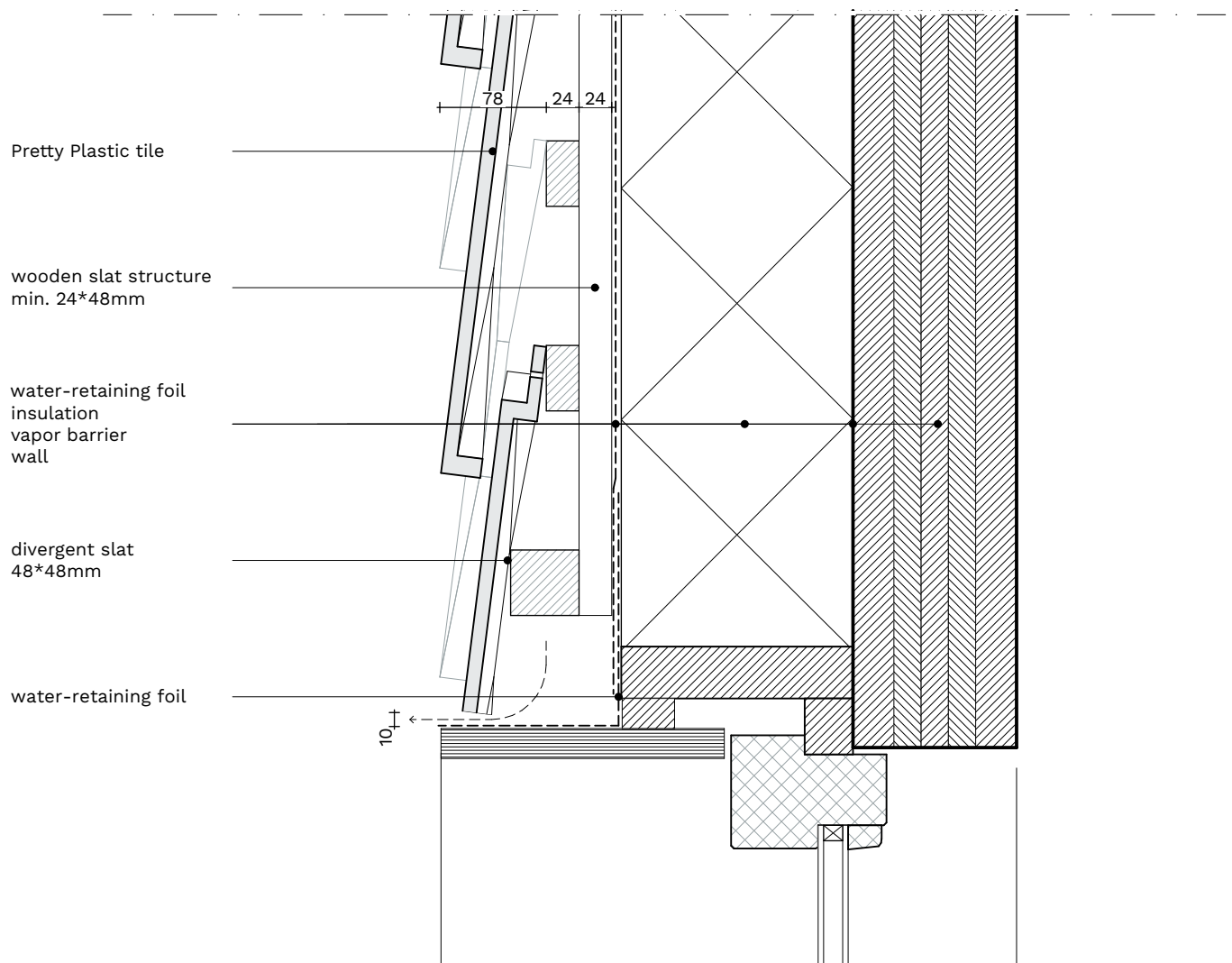


# INSTALLATION MANUAL

**PRODUCT NAME** FIRST ONE

## **D4 - TOP CONNECTION WINDOW FRAME**

SCALE 1:5



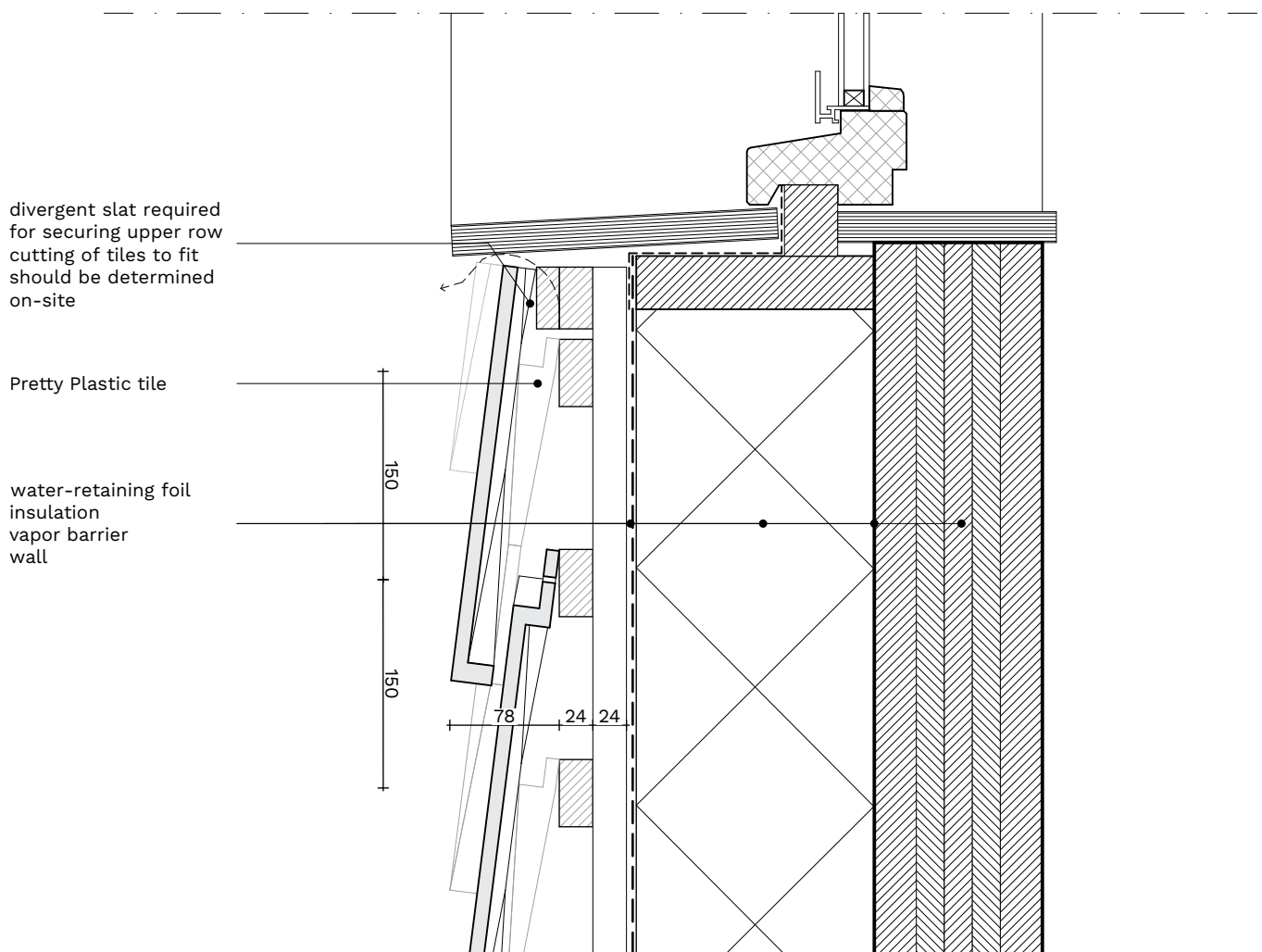


# INSTALLATION MANUAL

**PRODUCT NAME** FIRST ONE

## **D5 - BOTTOM CONNECTION WINDOW FRAME**

SCALE 1:5

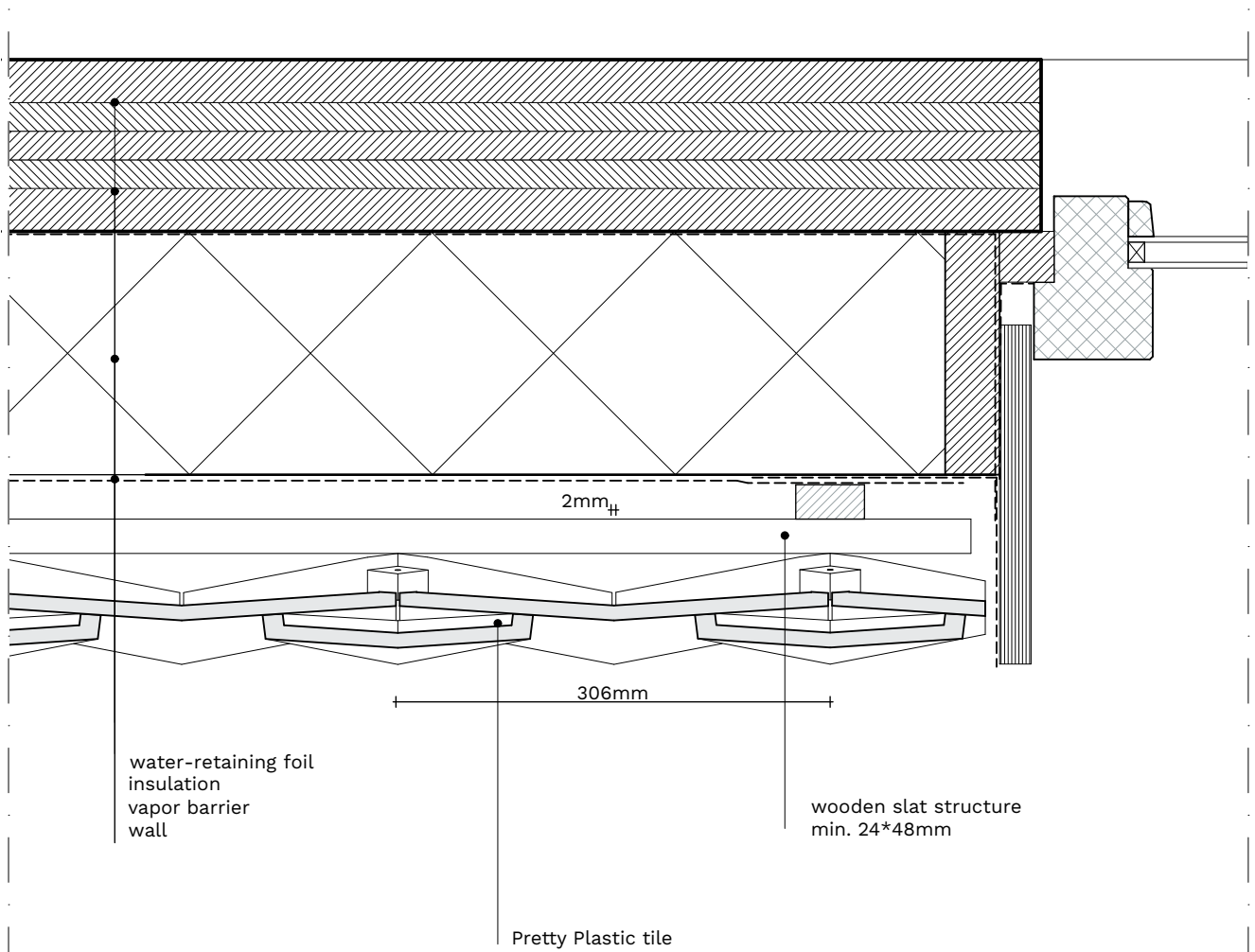


# INSTALLATION MANUAL

**PRODUCT NAME** FIRST ONE

## **D6 - WINDOW FRAME HORIZONTAL**

SCALE 1:5

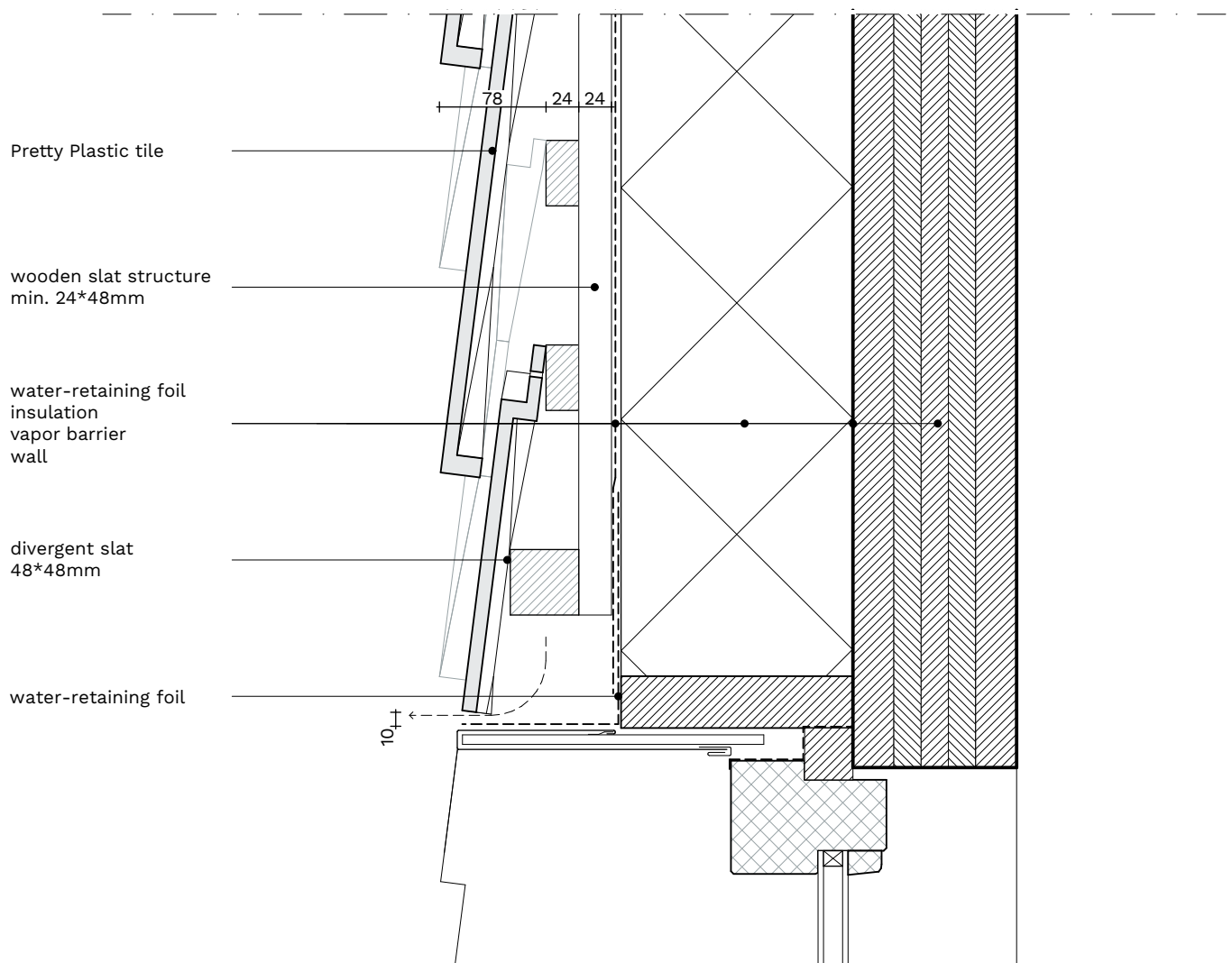


# INSTALLATION MANUAL

**PRODUCT NAME** FIRST ONE

## **D7 - TOP CONNECTION WINDOW FRAME**

SCALE 1:5

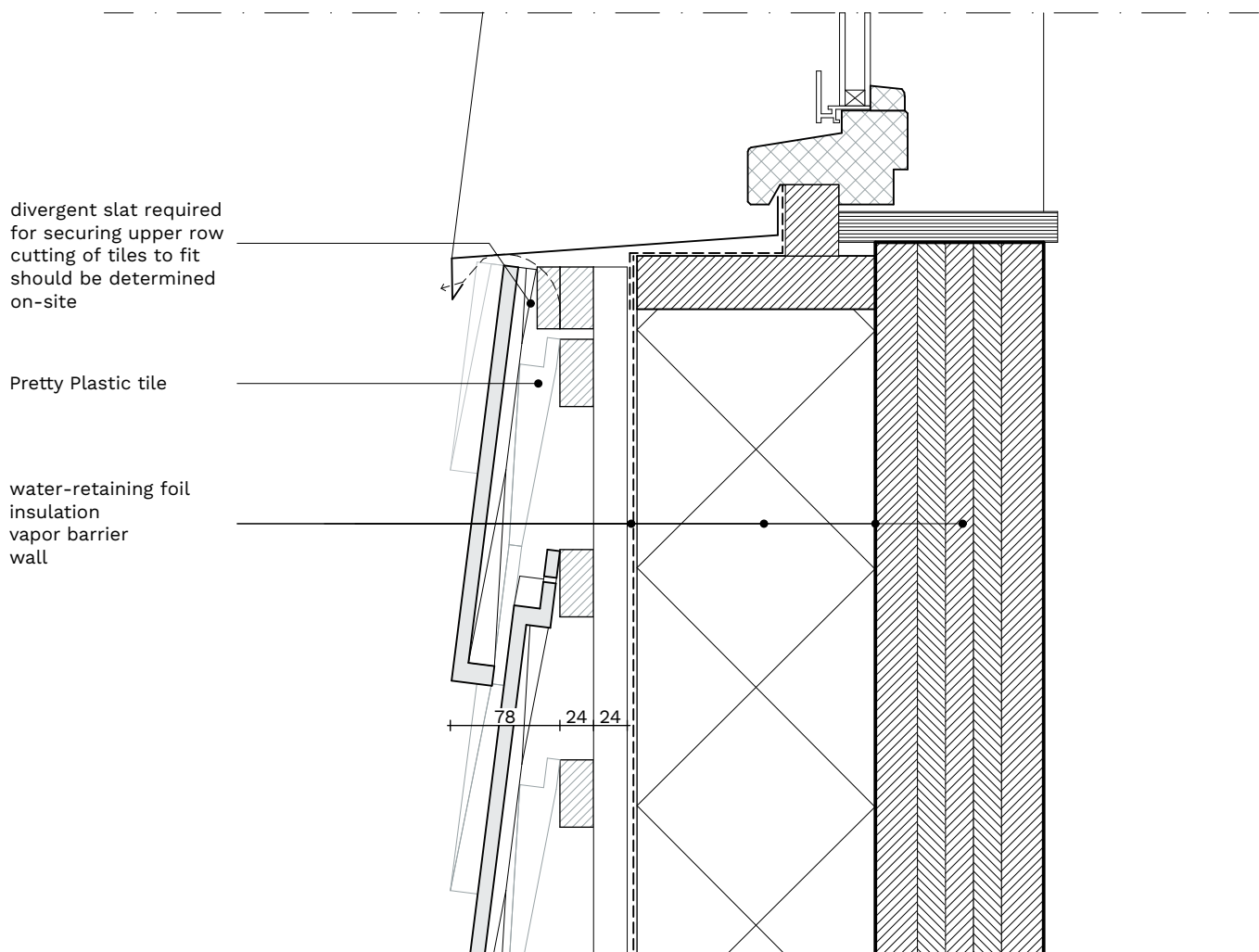


# INSTALLATION MANUAL

**PRODUCT NAME** FIRST ONE

## **D8 - BOTTOM CONNECTION WINDOW FRAME**

SCALE 1:5

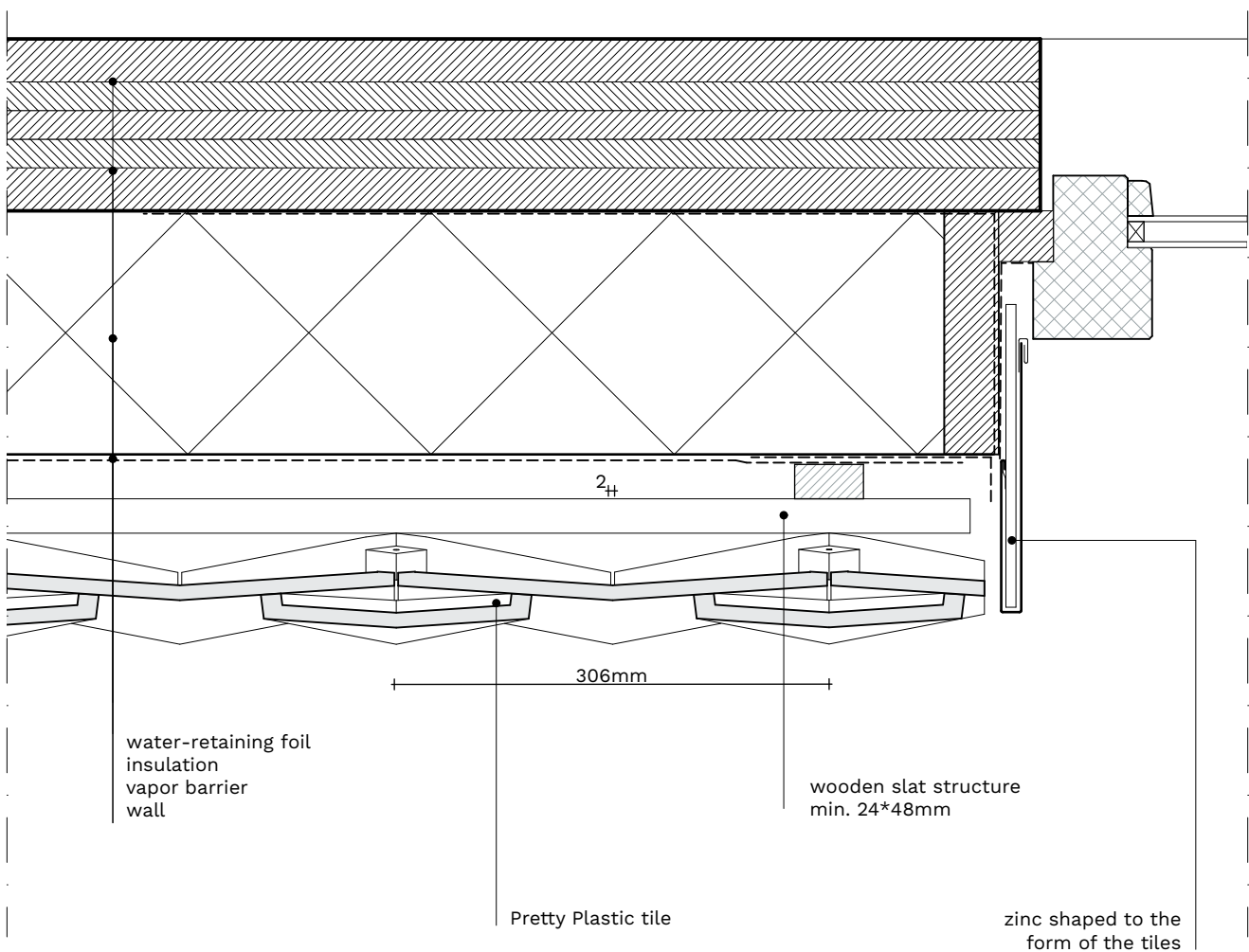


# INSTALLATION MANUAL

**PRODUCT NAME** FIRST ONE

## **D9 - WINDOW FRAME HORIZONTAL**

SCALE 1:5



# INSTALLATION MANUAL

**PRODUCT NAME** FIRST ONE

## **D10 - ROOF CONNECTION**

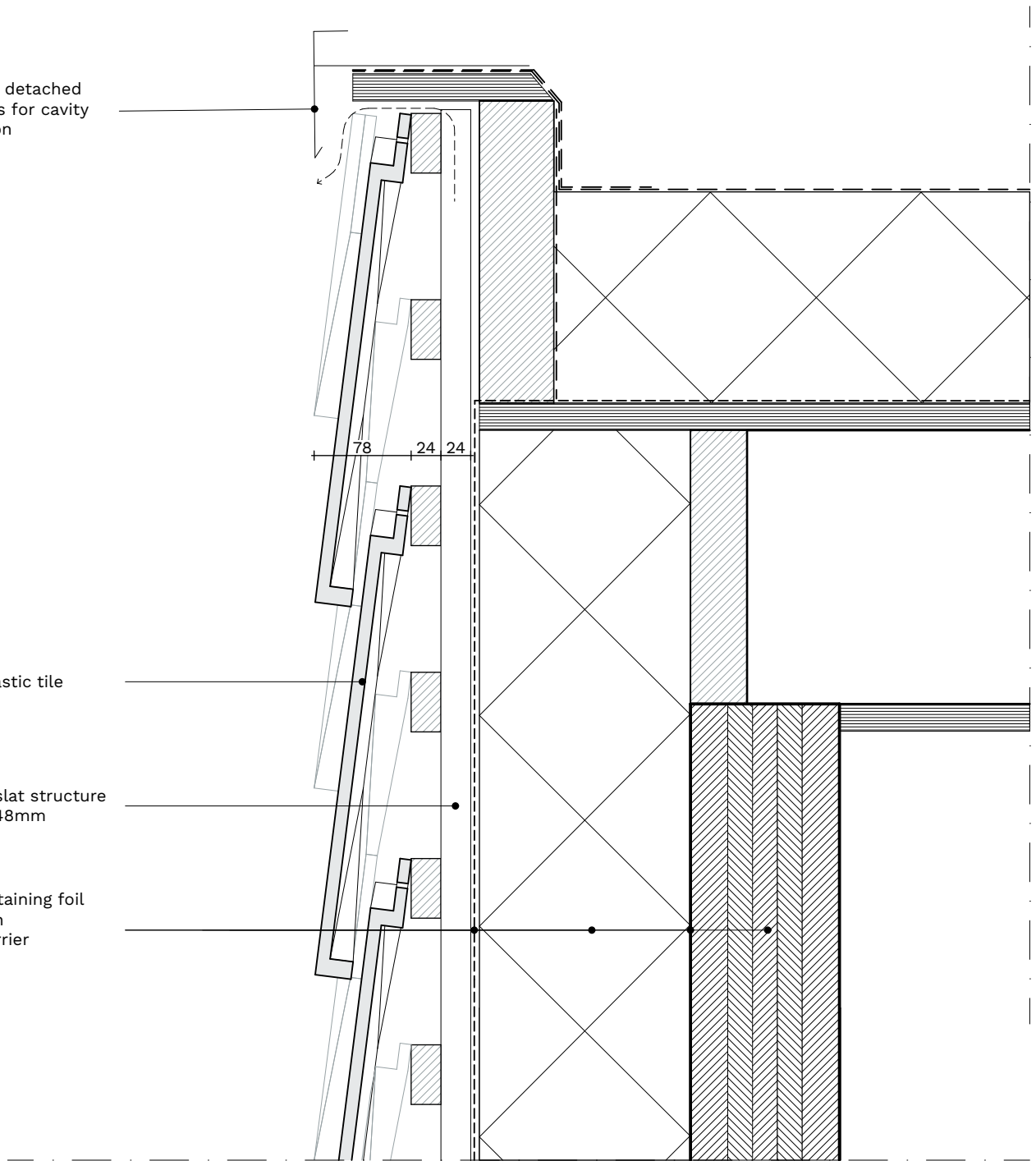
SCALE 1:5

roof trim detached  
from tiles for cavity  
ventilation

Pretty Plastic tile

wooden slat structure  
min. 24\*48mm

water-retaining foil  
insulation  
vapor barrier  
wall



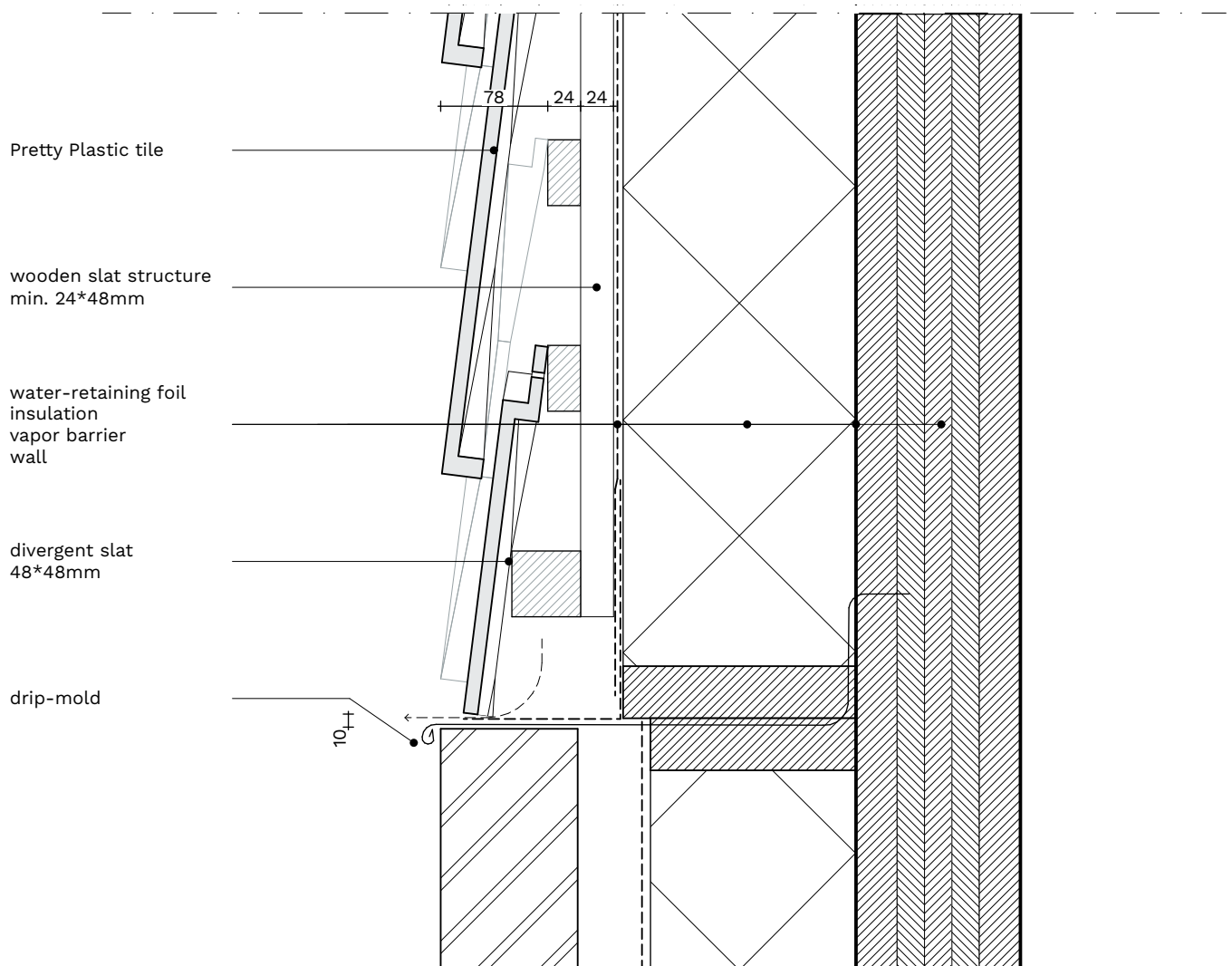


# INSTALLATION MANUAL

**PRODUCT NAME** FIRST ONE

## **D11 - WALL CONNECTION**

SCALE 1:5

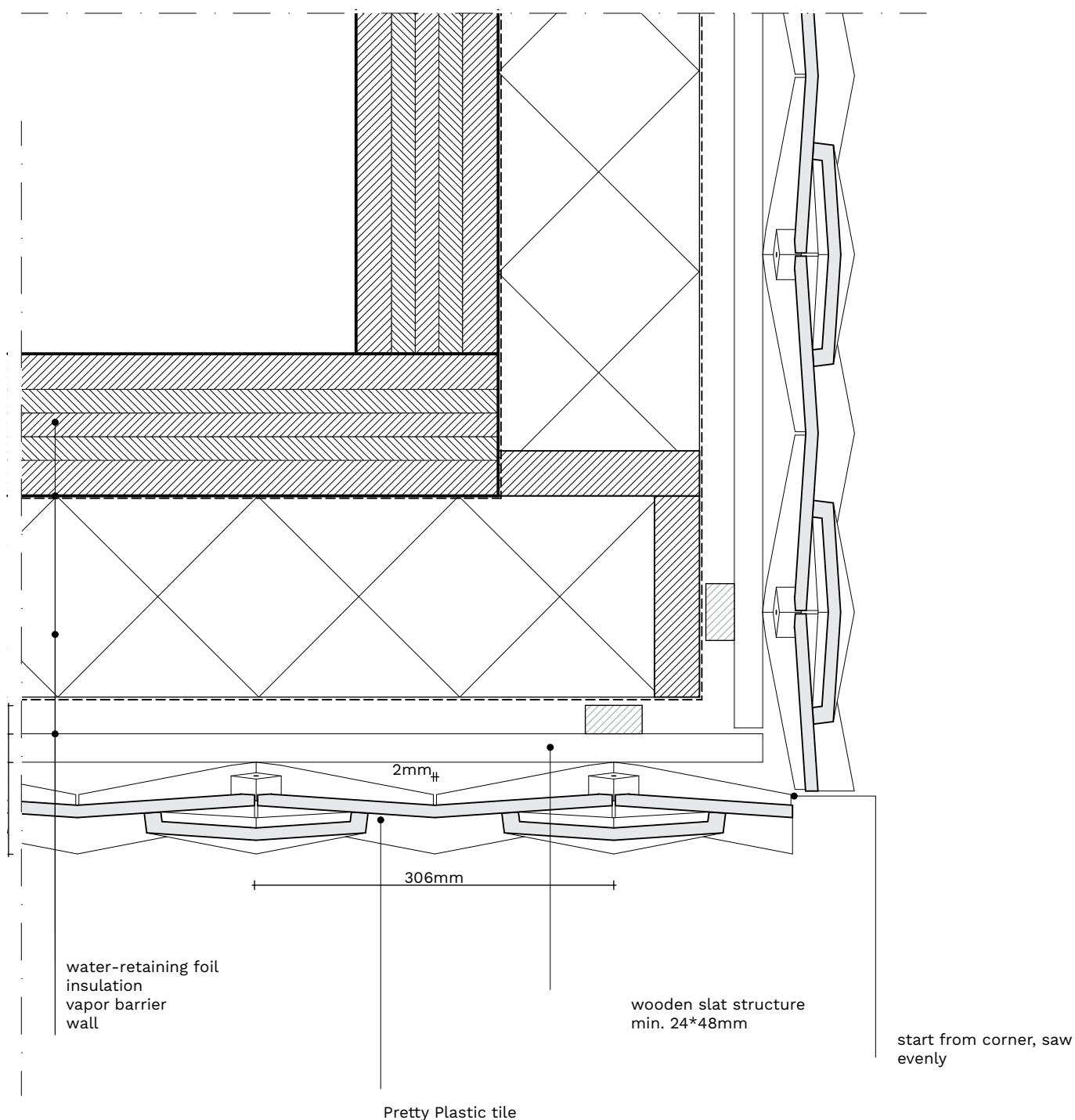


# INSTALLATION MANUAL

**PRODUCT NAME** FIRST ONE

## **D12 - CORNER CONNECTION**

SCALE 1:5

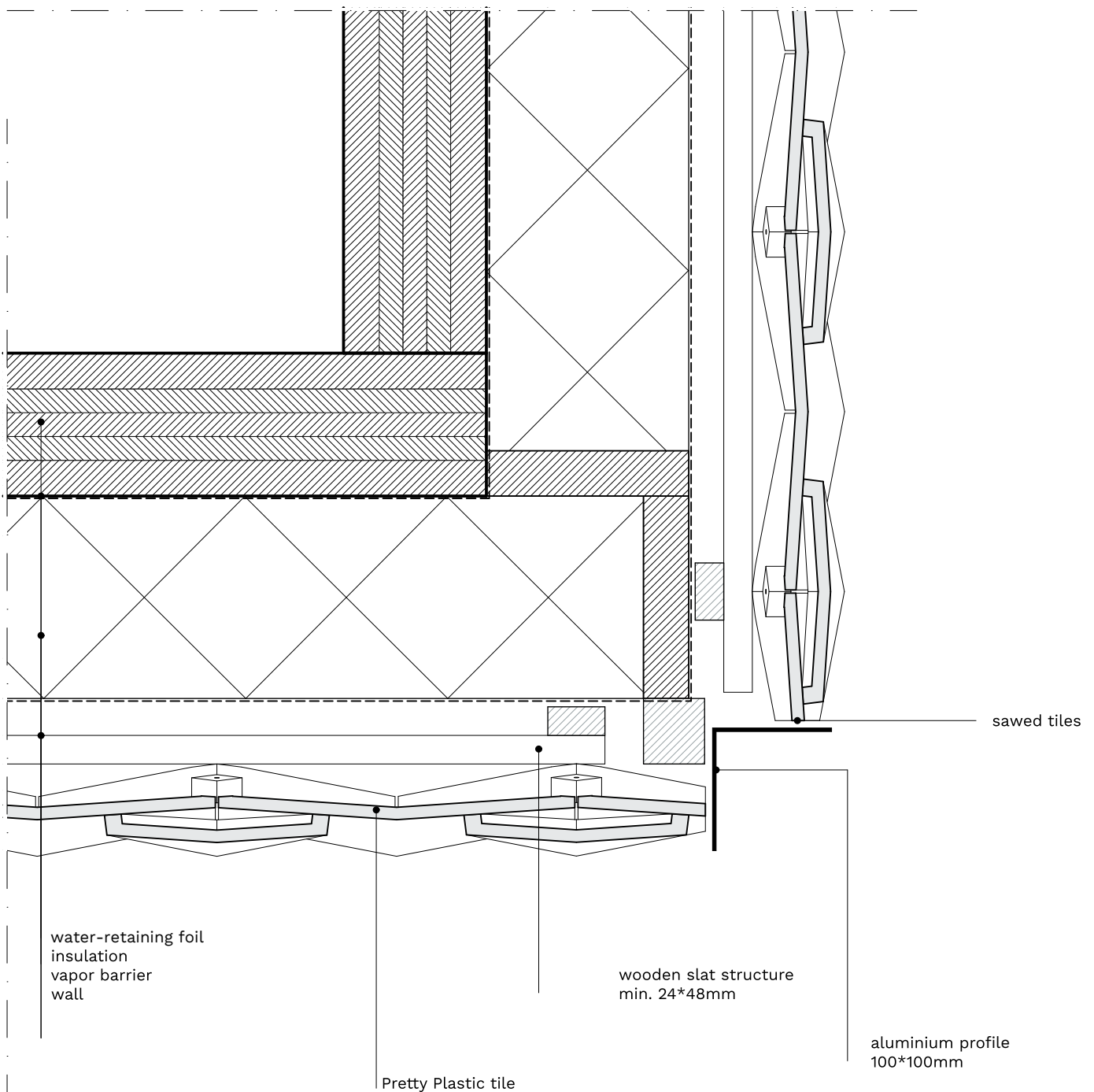


# INSTALLATION MANUAL

**PRODUCT NAME** FIRST ONE

## **D13 - CORNER CONNECTION**

SCALE 1:5

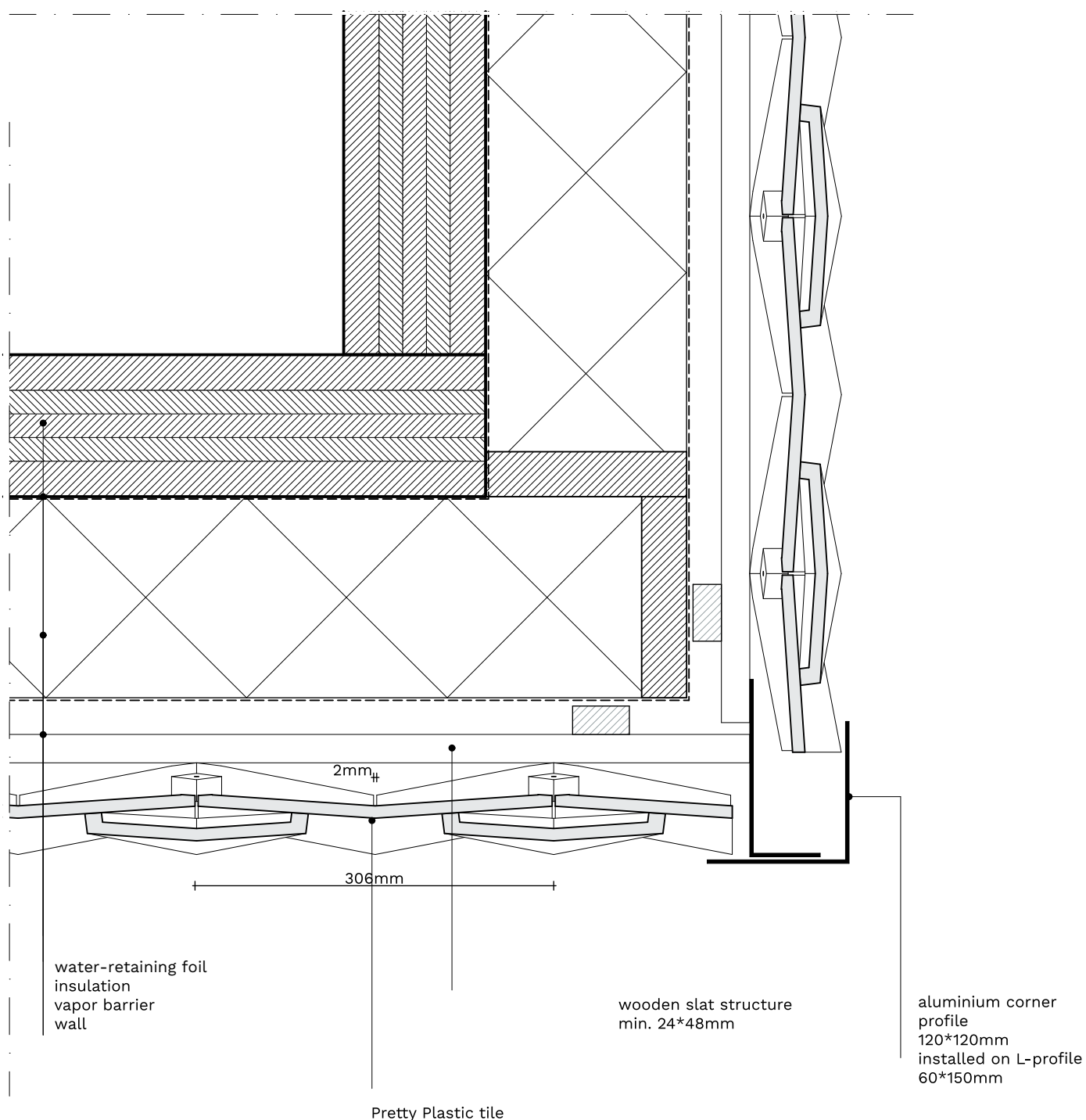


# INSTALLATION MANUAL

**PRODUCT NAME** FIRST ONE

## **D14 - CORNER CONNECTION**

SCALE 1:5

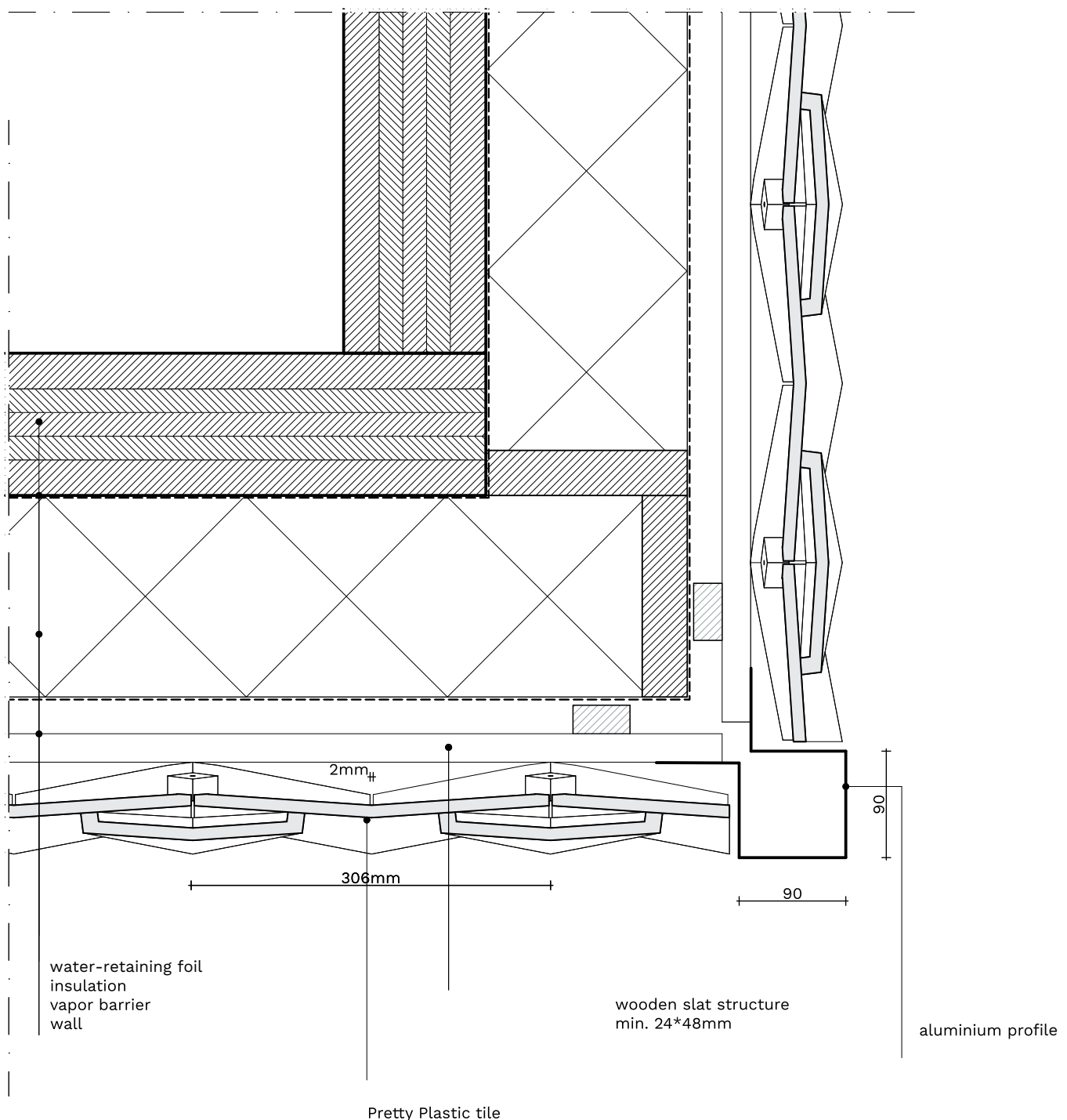


# INSTALLATION MANUAL

**PRODUCT NAME** FIRST ONE

## **D15 - CORNER CONNECTION**

SCALE 1:5



# INSTALLATION MANUAL

**PRODUCT NAME** FIRST ONE

## **D16 - CORNER CONNECTION**

SCALE 1:5

